

Submittal Data Sheet

Features and Benefits

- Five year parts and one year labor limited warranty*
- UL Listed to UL 1331 and CSA Z9170-1.
- Conforms to NFPA 99 and CGA standards
- Accepts Allied Chemetron style gas specific compatible male adaptors
- Compensates for variation in wall thicknesses from 1/2" to 1 1/4"
- Gas specific indexing
- Modular design
- All outlets are 100% tested for flow and leaks
- Gradate nameplate color coding per NFPA 99
- 360° swivel inlet tube
- Metal back and nameplate
- 5" centers
- Strength of connections provides support for dispensing equipment without the use of additional brackets.
- Made in the U.S.A.

*See Terms and Conditions, Document No. 99-0477, on our website at: www.tri-techmedical.com for complete details.

Specification

The medical gas wall outlets shall be Tri-Tech Medical Allied Chemetron compatible quick connect medical gas outlets. The outlets shall be modular singles, and shall incorporate nameplate color-coding in accordance with NFPA 99. The single modular outlets shall be of a design that provides for ganging of rough-in plates in the field to form multiples. The gas services shall be sequentially arranged and located as shown on the plans with a minimum centerline spacing of 5" inches (12.5 cm) between outlets.

The medical gas outlets shall be designed so that upon removal of the nameplate assembly, the secondary check valve shall operate automatically to stop the free flow of the positive pressure gas services. There shall be no secondary check for Medical Vacuum or WAGD services. The seal between the nameplate and the rough-in shall be a double O-ring which is serviceable without shutting off the gas service and is capable of supporting 10 pounds @ 2" from the nameplate without leaking.

The outlet nameplate shall be permanently gradate color coded with a durable, scratch resistant and protective label. The outlet trim plate shall be die cast aluminum, powder coated white, attached with the nameplate to the

rough-in assembly, and provide automatic plaster adjustment from 1/2 to 1 1/4 of an inch (1.3 cm to 3 cm).

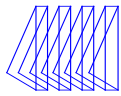


Part Number XA1124 Shown

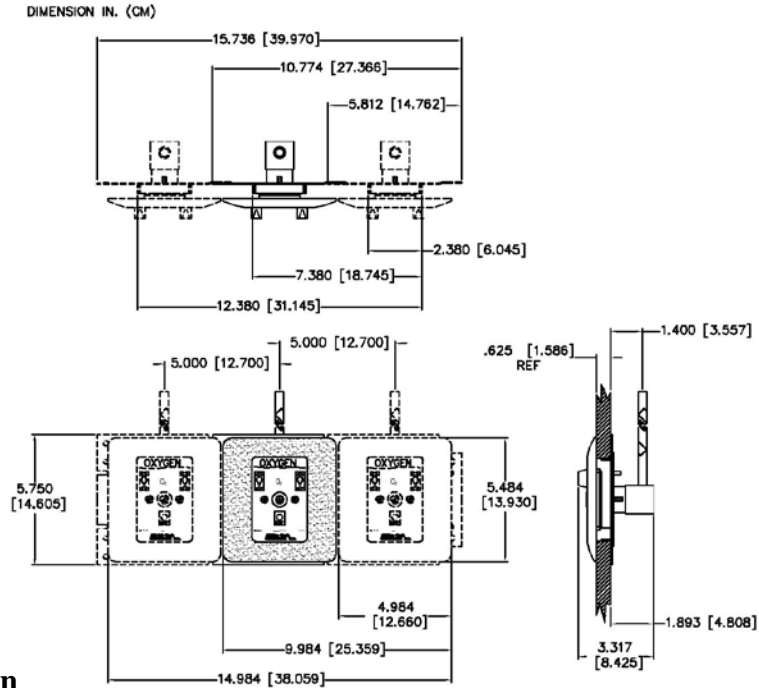
The name of the gas service shall be permanently marked on the outlet bracket and the outlet. The outlet's rough-in supply tube shall be a 7 inch (18 cm) length of 1/2 O.D. copper Type K for all gas services and labeled with the name of the gas service.

Medical gas outlets shall be cleaned for oxygen service in accordance with the current Compressed Gas Association (CGA) Pamphlet G-4.1, capped and placed in a protective container for shipment. The outlets shall be installed in strict accordance with manufacturer's instructions, and tested before use in conformance with local and federal codes.





Layout



Ordering Information

Standard Recessed Outlets Complete - with the Die Cast Aluminum White Trim Plate
**Indicates that these are NOT UL listed Outlets, Slides are not subject to UL Listing*

Gas Service	Recessed Wall Complete	MRI Compatible Wall
Nitrous Oxide	XA1104	*XA1104-MRI
Carbon Dioxide	XA1108	*XA1108-MRI
Nitrogen	N/A	N/A
Medical Air	XA1116	XA1116-MRI
Medical Vacuum	XA1122	XA1122-MRI
Oxygen	XA1124	XA1124-MRI
WAGD	XA1132	*XA1132-MRI
Instrument Air	N/A	N/A

Slide	Die Cast White	Die Cast White MRI
	XF1144-DC	XF1144-DC-MRI

If Ordering Die Cast Pewter Trim Plate for Wall Outlets you need Back Bodies & Faceplates ordered Separately

Gas Service	Back Body ½ Tube Size Wall	Outlet Faceplate	Trim Plate Die Cast Pewter
Nitrous Oxide	XC1104-A	XA1004-A	XC1000-9DCP
Carbon Dioxide	XC1108-A	XA1008-A	
Nitrogen	N/A	N/A	
Medical Air	XC1116-A	XA1016-A	
Medical Vacuum	XC1122-A	XA1022-A	
Oxygen	XC1124-A	XA1024-A	
WAGD	XC1132-A	XA1032-A	
Instrument Air	N/A	N/A	

Slide	Die Cast Pewter
	XF1144-DCP

Slides are not subject to UL Listing

To place an order or request additional information call toll-free 1-800-253-8692 or fax us at 1-440-937-5060 or e mail us at sales@tri-techmedical.com. Please visit our web-site at www.tri-techmedical.com.